

AutoProof ProTM Imaging Suite

Introducing the NEWEST addition to our enhanced line of automated inspection solutions, AutoProof Pro S. Packed with new streamlined features that will increase efficiency and productivity.

- Colored side-by-side view to reduce review times.
- Advanced user management functionality.
- Folder monitoring for faster project setup.
- Improved reporting capabilities.

AutoProof Pro S is the ideal solution to handle stringent industry demands.

APPLICATIONS

- Pharmaceutical
- Manufacturing
- Healthcare
- Printing
- Medical Devices
- Packaging
- Aerospace
- Legal
- Education
- Forensic Analysis

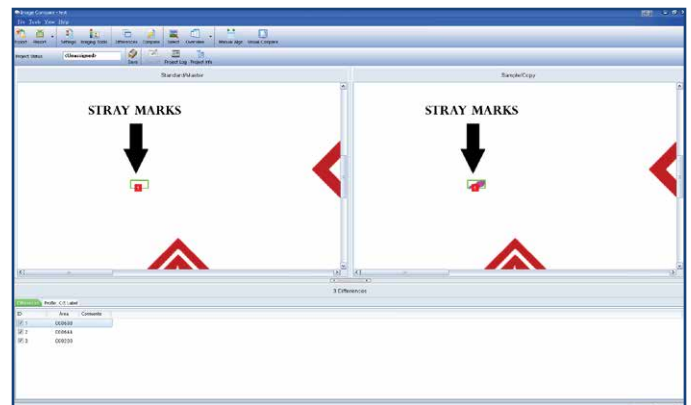
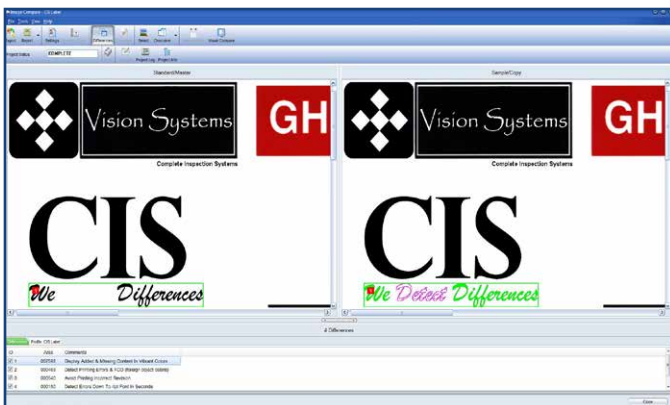


100% Accurate



COMPARISON

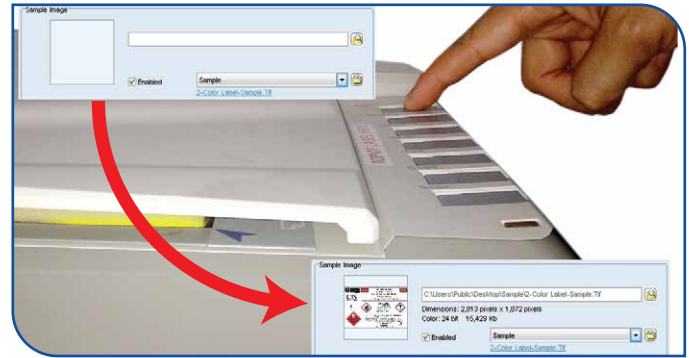
View and compare documents how they were meant to be viewed, in their native color layout. With new side-by-side color window panes, view comparison results without converting to grayscale. The image compare algorithm colorizes detected defects for easy review.



Master and Sample documents side-by-side in their native full color view allows for easier detection of defects.

USER MANAGEMENT

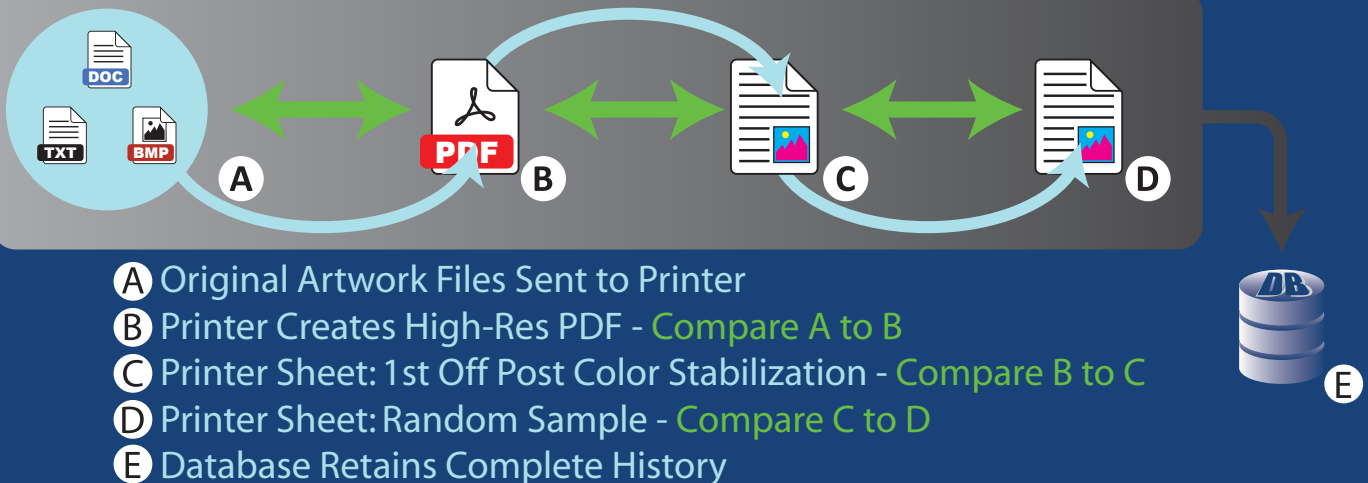
- ✓ The user management interface gives administrators more controls and the ability to apply settings to grouped users.
- ✓ Schedule auto-backups of important database configuration files and project logs to ensure data is always secure.
- ✓ Review important analytics with the new report functions. Determine the number of projects created and completed, which users had access to the system, and what files were added and deleted. Guarantee 100% user accountability.



FOLDER MONITORING

Reduce project setup time utilizing our custom "Folder Monitoring" function. Now, scanning and uploading files for comparison is as easy as clicking a button on a scanner.

AutoProof Pro™ Imaging Suite



System File Compatibility:



Adobe PDF, MS Word DOC, Text, Rich Text, HTML, Bitmap, PNG, TIFF, JPEG and XML